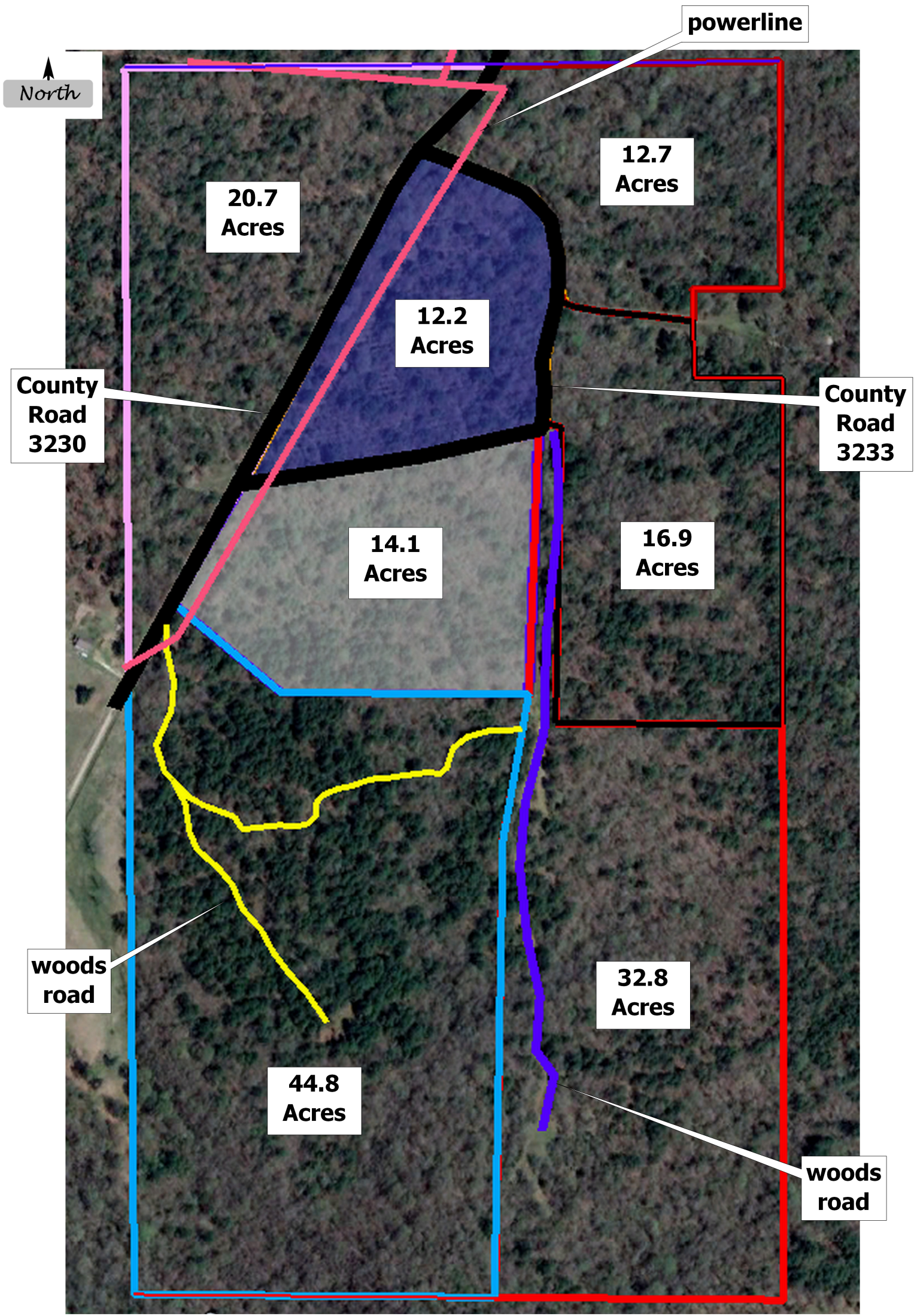


**Thornton Estate - Red River County, Texas - Proposed Parcel Mapping**  
 - Acreages are Approximate and Not Guaranteed  
 - Interior Parcel Lines are at Centerline of Public Roads as Applicable



**Map is Illustration of Parcels being offered - Parcel Boundaries Not Yet Surveyed**  
 Access to 32.8 Acres to be approximately 75 feet wide

Thornton Estate 154.2 Acres - Parcel Pricing Table

Approximate Acres	Listed Price Per Acre	Total Parcel Price
44.8	\$ 6,500	\$ 291,200
12.2	\$ 12,000	\$ 146,400
20.7	\$ 10,500	\$ 217,350
14.1	\$ 10,500	\$ 148,050
16.9	\$ 8,500	\$ 143,650
32.8	\$ 7,500	\$ 246,000
12.7	\$ 10,500	\$ 133,350

This map is provided for illustration purposes only, and no warranties are given or implied concerning the accuracy of the data presented. This map is not a survey plat. All boundary line locations and acreage calculations are approximations only. Users are strongly advised to independently verify all geographic and legal information.