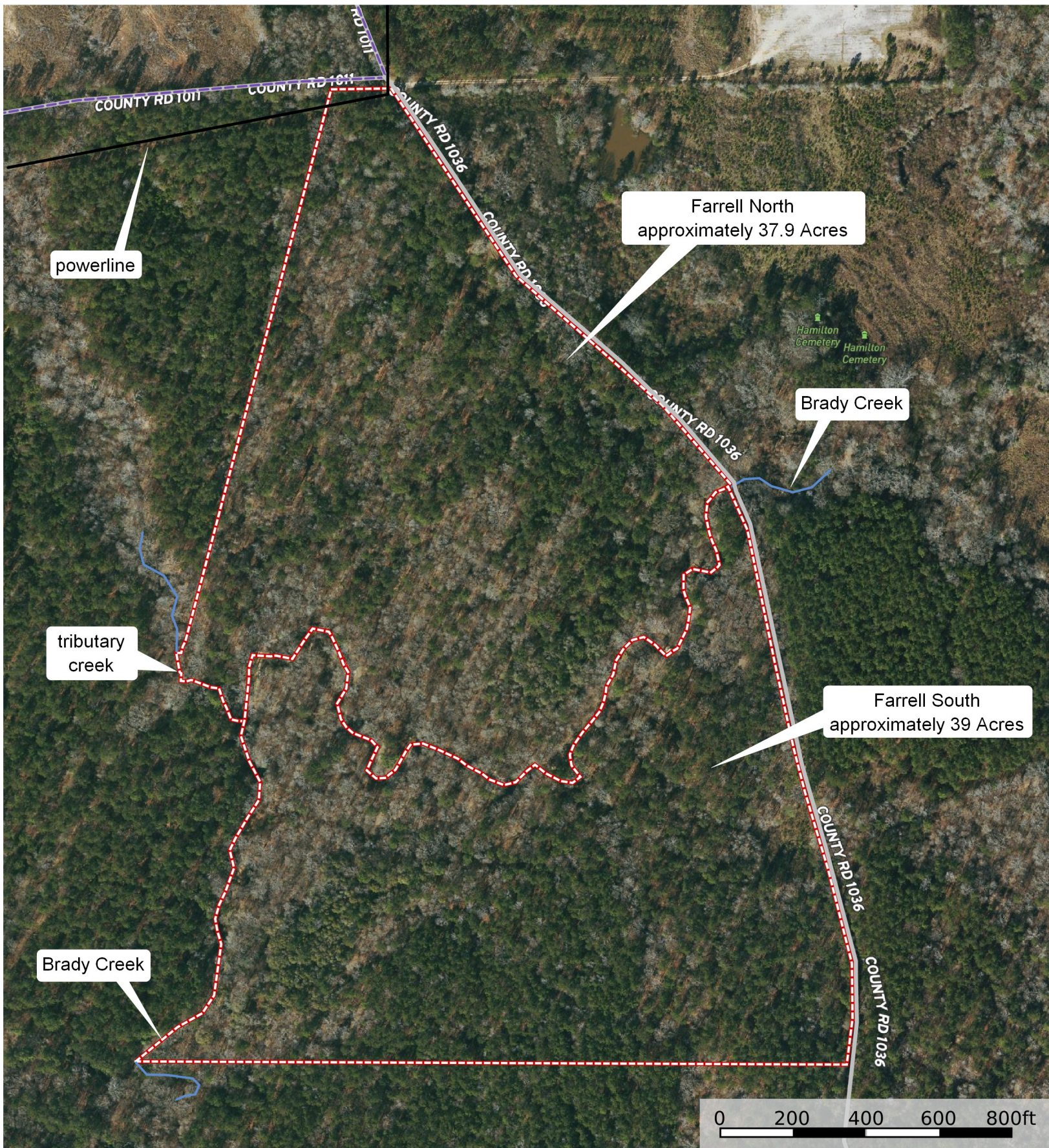


Farrell North - approximately 37.9 Acres
Farrell South - approximately 39 Acres

Total Deed 76.978 Acres
Levi Cole Survey Abstract 108, Shelby County Texas



--- county road — creek □ Boundary

**Parcels are to be surveyed out
of Total Tract - acreages are
rough estimates only**



This map is provided for illustration purposes only, and no warranties are given or implied concerning the accuracy of the data presented. This map is not a survey plat. All boundary line locations and acreage calculations are approximations only. Users are strongly advised to independently verify all geographic and legal information.

Mark Brian
936-590-0986

www.terrastonelandco.com

2557 State Hwy 7 East Center, Texas